



# North west European composite surface rain rate estimate



# The North-West European Composite, Surface Rain Rate Estimate is an international radar composite produced by Met Office (UK).

Composite, radar reflectivity derived, surface rain rate estimate product in HDF5 or BUFR code from stations covering France, Germany, Ireland, The Netherlands, and United Kingdom.

## Coverage/Domain

The North-West European Composite Surface Rain Rate Estimate uses input from the following countries. Please note the differences between the 1km and 5km products. Maximum number of radars:

Country/composite	1km composite	5km composite
United Kingdom (UK)	Max 16 radars	Max 16 radar
Ireland	Max 2	Max 2
France	Max 17	Max 25
Germany	Max 15	Max 17
The Netherlands	Max 2	Max 2

Note: There will be times when radars are not available for various reasons e.g. maintenance.

## Frequency

4 images per hour (every 15 minutes).

## Format

HDF5 & BUFR (for which a decode is freely available).

## Availability

The data is available from the Met Office and is transmitted within 20 minutes of validity time of the product.

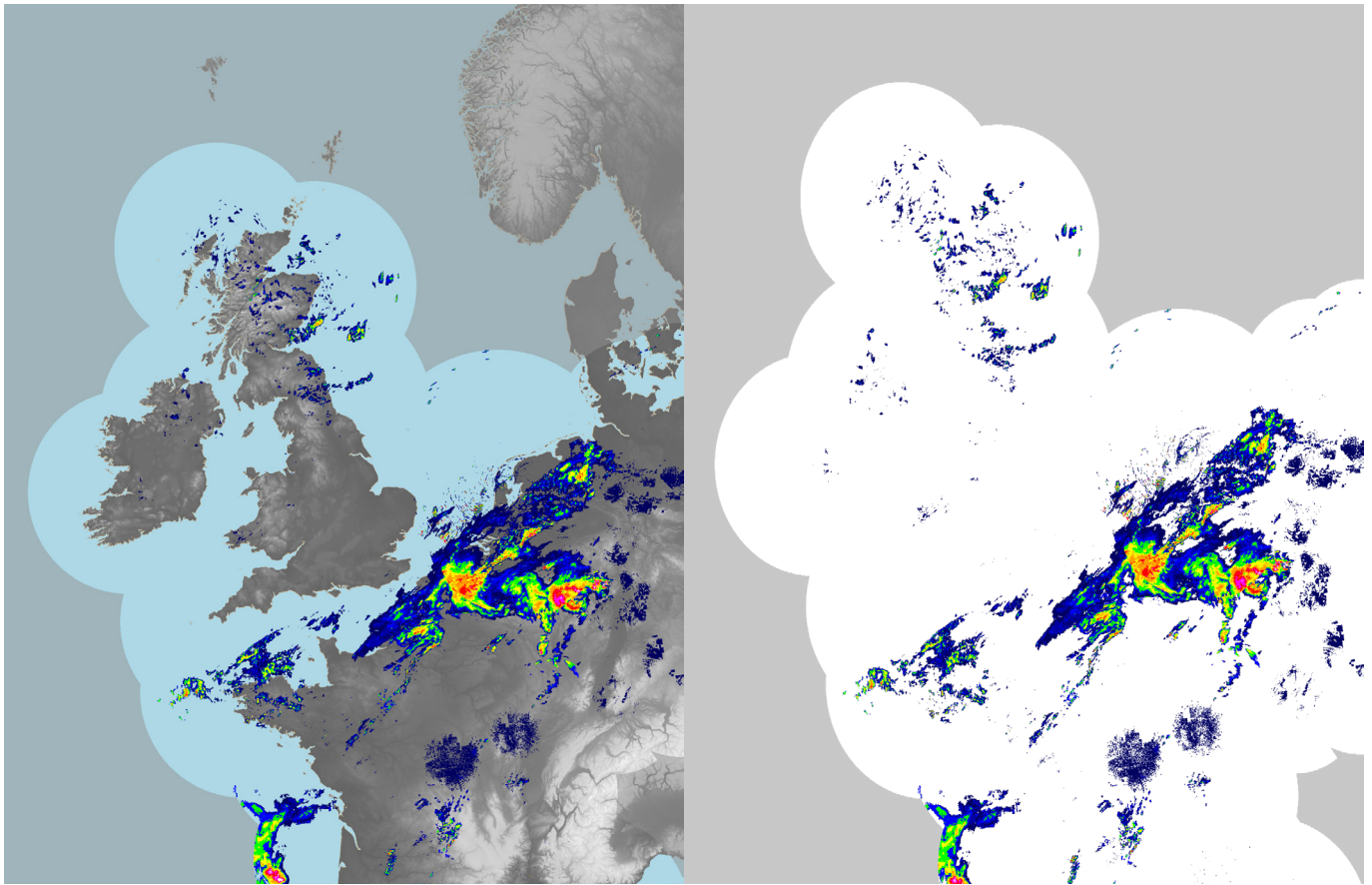
## Resolution

1km<sup>2</sup> & 5km<sup>2</sup> available.

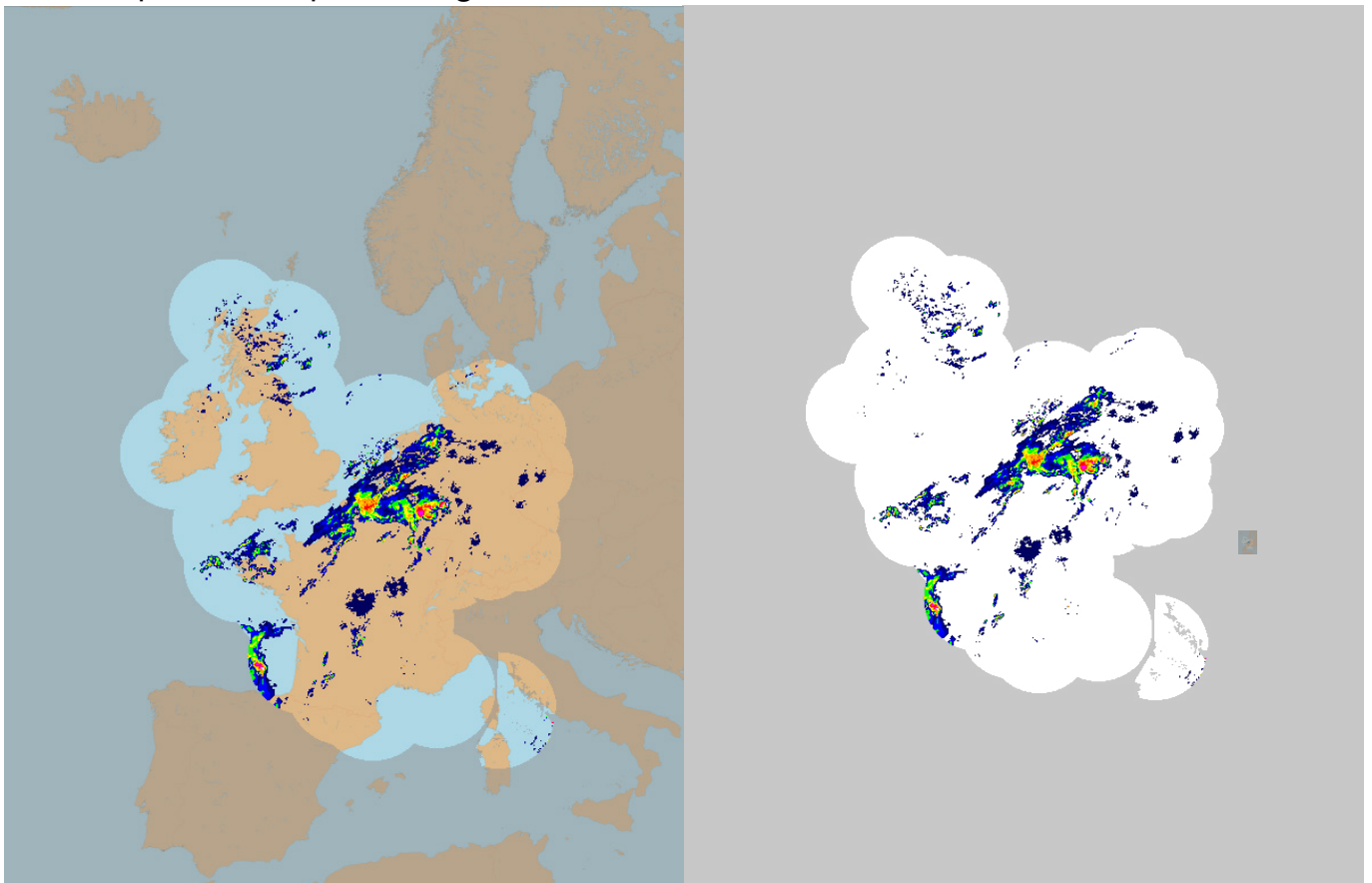
**Useful links:** Met Office radar fact sheet: [factsheet\\_15-weather-radar-2020\\_2023.pdf \(metoffice.gov.uk\)](#)



## 1km composite example coverage



## 5km composite example coverage



Met Office  
FitzRoy Road, Exeter  
Devon, EX1 3PB  
United Kingdom

Tel: +44 330 135 0000  
Fax: +44 330 135 0050  
dpt@metoffice.gov.uk  
www.metoffice.gov.uk/data-provision  
www.linkedin.com/groups/8459036

Produced by the Met Office. © Crown  
Copyright 2021 00667 Met Office and the  
Met Office logo are registered trademarks  
Information correct at time of going to print,  
July 2024