

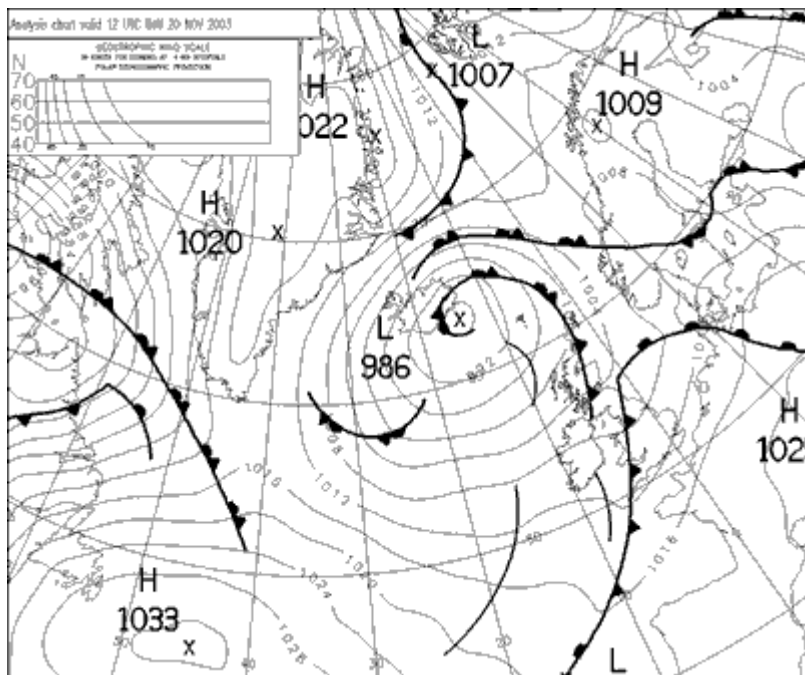
Rainfall over south-east England, 20-23 Nov 2003

After a dry summer and autumn, heavy rain fell over south-east England between 20-23 November 2003.

Using data available on the 25th, November is the wettest month of the year in the south-east/central southern region with 117.6 mm. Previously during 2003, January was the wettest with 86.8 mm.

Synoptic situation

The animation below (12-hourly time steps) shows the pressure systems and fronts responsible for the rainfall over south-east England between 20 and 23 November 2003.



Rainfall station data 20-23 November

The table below shows the highest rainfall totals recorded between 20 and 23 November 2003, using data available on 24 November 2003. Most of the rain fell in the 48 hours between 21:00 on 21 November to 21:00 on 23 November.

Station	Rainfall 20-23 November 2003							48-hour total ending 21:00 on 23 Nov
	20 Nov	21 Nov	22 Nov	23 Nov	20-23 Nov	Nov monthly average	4-day total as per cent of average	
	(mm)	(mm)	(mm)	(mm)	(mm)	(mm)	per cent of average	
Charlwood	10.0	25.2	38.4	20.4	94.0	79.0	119%	81.4
Wisley	5.8	20.8	33.0	25.4	85.0	61.9	137%	76.4
Odiham	5.4	13.8	31.4	30.8	81.4	72.2	113%	71.4
Kenley Airfield	10.4	13.0	35.2	22.4	81.0	79.3	102%	67.6
Herstmonceux	9.6	17.2	40.0	7.8	74.6	93.8	79%	63.4

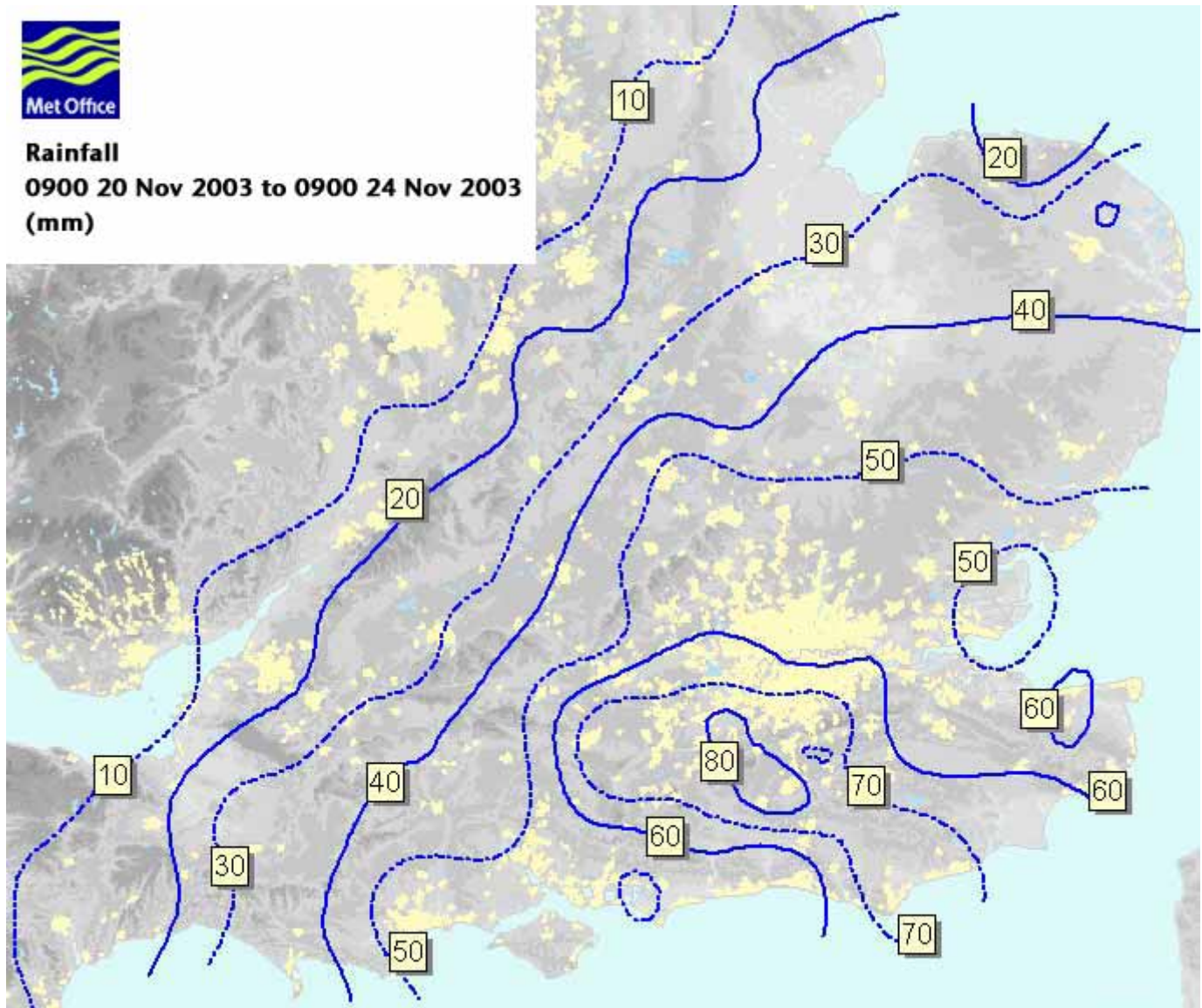
Guernsey Airport had 75.1 mm during the four days 20-23 November.

Averages are calculated for the period 1961-90 and have been estimated where a 30-year record is not available.

Rainfall maps for 20-23 November

The maps below show the four-day rainfall totals for 20-23 November 2003. The anomaly map expresses the total as a percentage of the the 1961-90 long-term November average.

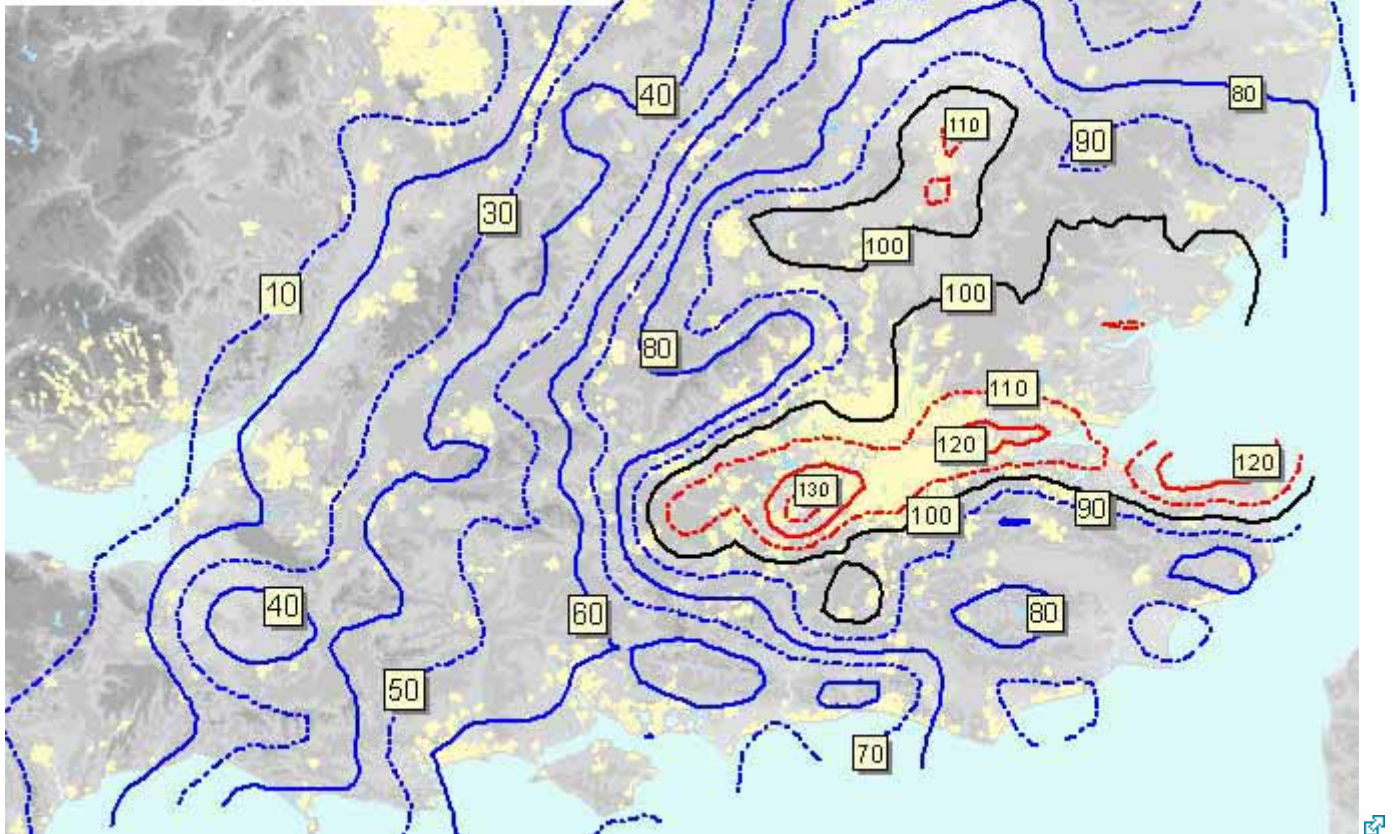
Rainfall 20-23 Nov 2003



Anomaly 20-23 Nov 2003



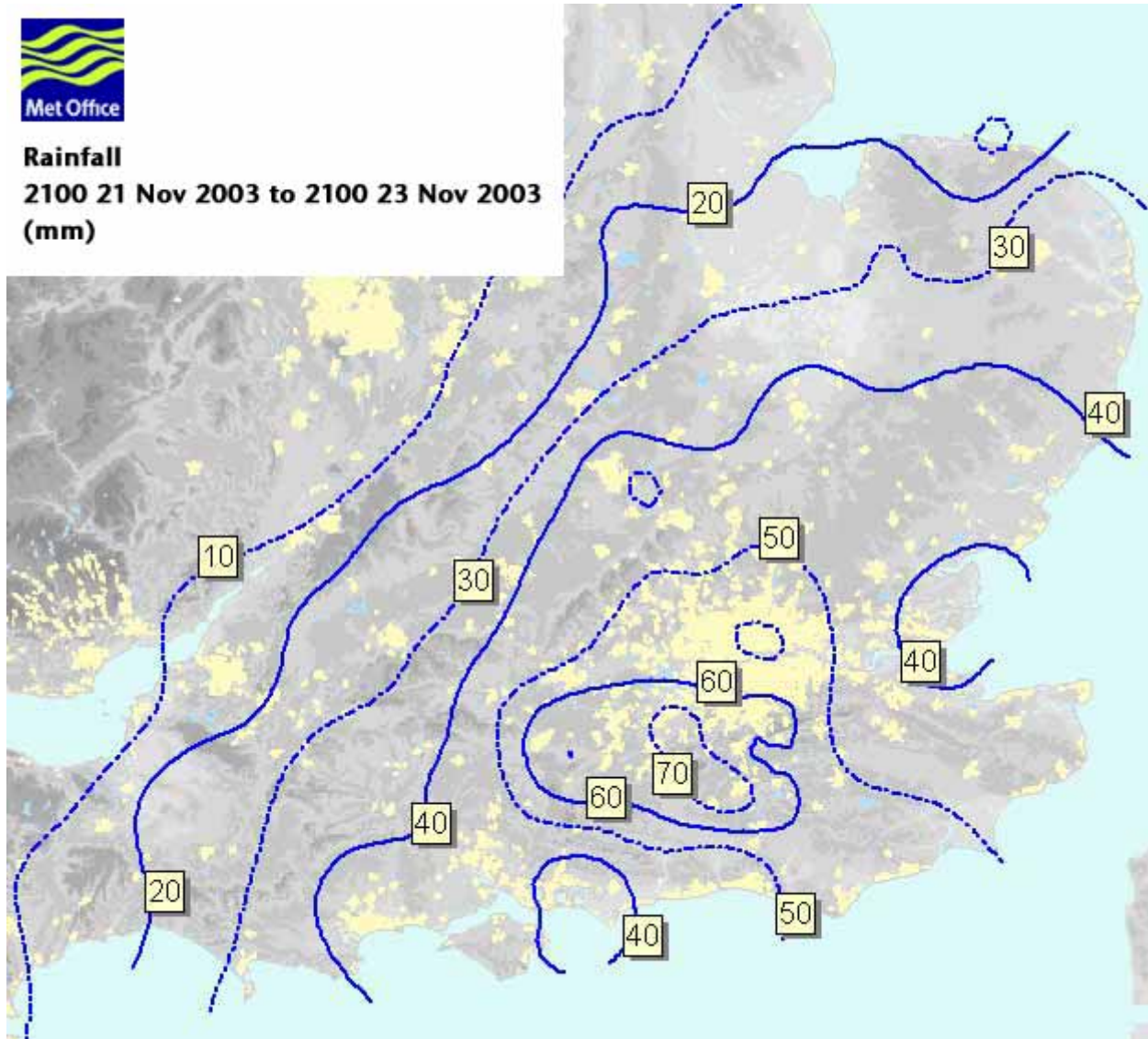
Rainfall anomaly
0900 20 Nov 2003 to 0900 24 Nov 2003
(Percent of Nov monthly average)



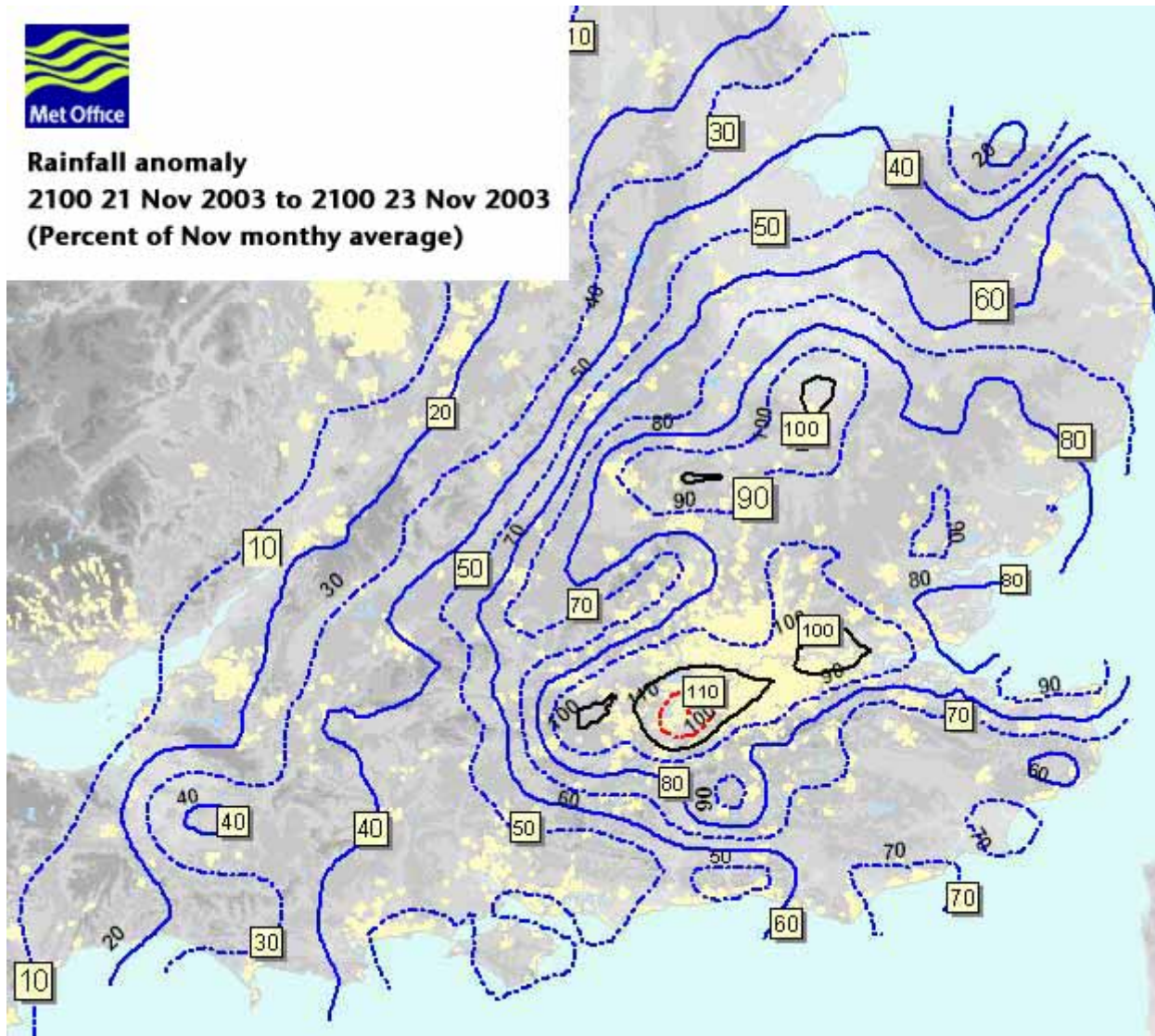
48-hour rainfall maps

Most of the rain fell in the 48 hours between 21:00 on 21 November and 21:00 on 23 November. The maps below show rainfall totals for this period. The anomaly map expresses the total as a percentage of the the 1961-90 long-term November average.

48-hour rainfall



48-hour anomaly



Maps use information available on 24 November 2003.

Last updated: 6 November 2012